



GLASS TOP

Carrabile

Resistenza meccanica: 40 ton

Pur essendo carrabile il prodotto deve essere installato al di fuori della carreggiata

Autopulente

Carriageable

Mechanical resistance: 40 ton

Even if carriageable the product must be installed outside of the roadway

Self cleaning

Omologato <i>Approved</i>	UNI EN1463-2	Ministero Infr. Trasporti Conforme all'Art.153 (Art.40 C.d.S.)
Riflessione <i>Reflection</i>	360°	
Materiale <i>Material</i>	Vetro temprato Tempered glass	
Dimensioni <i>Dimensions</i>	ø100 mm	
Altezza fuori terra <i>Dome height</i>	19 mm	



MINI GLASS TOP

Carrabile

Resistenza meccanica: 18 ton

Pur essendo carrabile il prodotto deve essere installato al di fuori della carreggiata

Autopulente

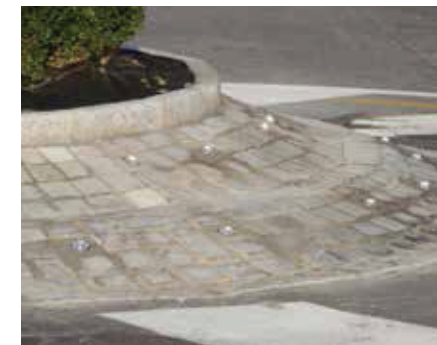
Carriageable

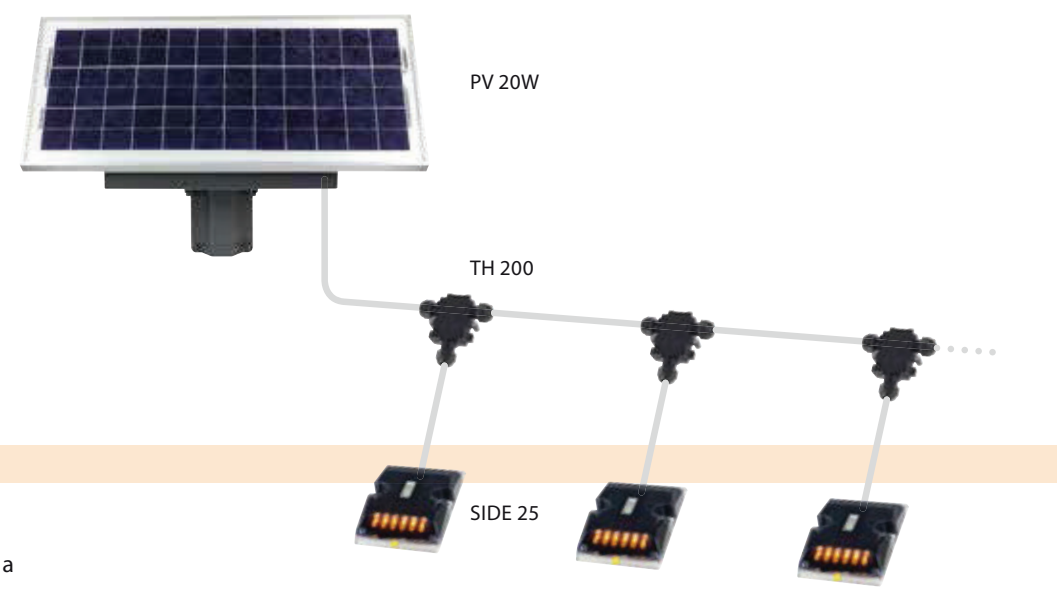
Mechanical resistance: 18 ton

Even if carriageable the product must be installed outside of the roadway

Self cleaning

Certificato <i>Certified</i>	UNI EN1463-2	Conforme all'Art.153 (Art.40 C.d.S.)
Riflessione <i>Reflection</i>	360°	
Materiale <i>Material</i>	Vetro temprato Tempered glass	
Dimensioni <i>Dimensions</i>	ø50 mm	
Altezza fuori terra <i>Dome height</i>	11.5 mm	





KIT PUNTI PERICOLOSI DANGEROUS POINTS KIT

Impianto luminoso IP67 con marker stradali a LED ad alimentazione fotovoltaica.

Grado di protezione IP67.

Ideale per la segnalazione di cuspidi, rotonde, punti pericolosi ecc.

Il kit è composto da:

SIDE 25 : marker a LED monofacciale ambra

TH 200: scatola di protezione IP67 con morsettiera speciale 3 poli.

Kit fotovoltaico da 20 W compatto con supporto per il montaggio su palo Ø 60.

LED markers IP67 powered by a compact photovoltaic kit.

Ideal for dangerous points, roundabouts and fatal edges.


Ready for installation.

The kit includes:







SIDE 25 : LED marker single side amber

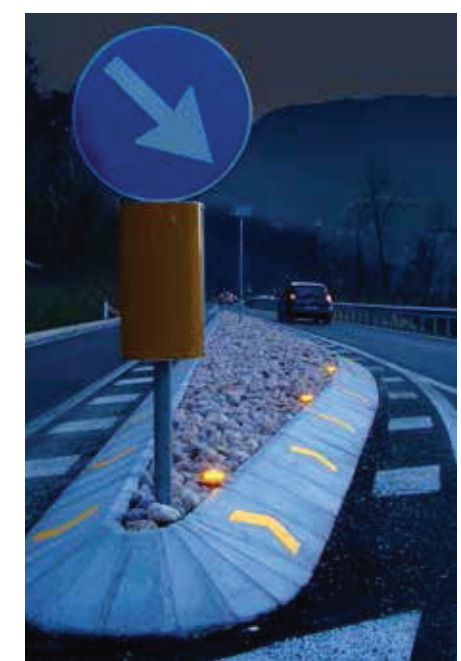
TH 200 : IP65 rates protective box for special 3 poles terminal block.

Compact photovoltaic kit 20 W mounting plate- Ø 60.

Guarda il video su / Watch the video on: 
<http://www.youtube.com/watch?v=wY50vra802Q>



Numero di marker collegabili /		Maximum number of connected markers :			
3	6	7	15	15	30
lampeggio flashing on time 50%	lampeggio flashing on time 50%	lampeggio flashing on time 20%	lampeggio flashing on time 20%	lampeggio flashing on time 10%	lampeggio flashing on time 10%
					






POWER GROUND 2

Inserto LED a raso di elevata potenza luminosa (>140cd)
Carrabile
Resistenza meccanica: 25 ton

In-pavement High Power LED (>140cd)
Carriageable
Mechanical resistance: 25 ton

Conforme	Art.153 (Art.40 C.d.S.)		
Colore LED LED colour		Optica LED orientabile brevettata Orientable patented LED optics	
Luce Light	Fissa Steady	Lampeggiante sincr.* Sync flashing*	Sequenziale Sequence
Alimentazione Input voltage	11...48 VDC	Consumo Power consumption	HP: 5 W LP: 1.5 W
Materiale Material	Alluminio pressofuso Die-cast aluminum		
Dimensioni Dimensions	ø160 x 60.5 mm		

* Con modulo lampeggio esterno - *With external flashing control unit.





SIDE 25

Marker stradale a LED per gallerie, rotonde, cuspidi, punti pericolosi, ecc.

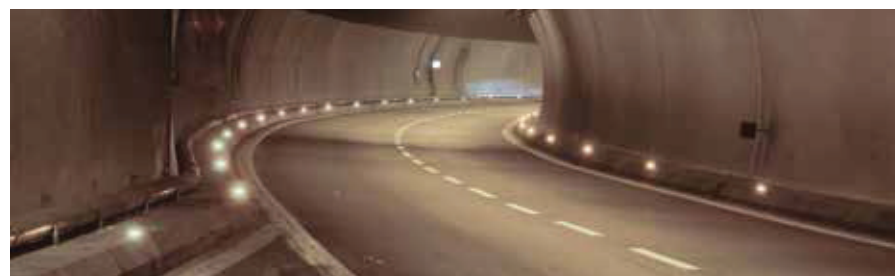
6 LED ad alta luminosità per lato
Il prodotto deve essere installato al di fuori della carreggiata

LED marker for tunnels, roundabout, dangerous point, edges, etc.

6 high-brightness LEDs each side
The product must be installed outside of the roadway

Conforme	Art.153 (Art.40 C.d.S.)		
Colore LED LED colour	 Monofacciale - 1 side	 Bifacciale - 2 sides	Altri colori su richiesta Other colors on request
Luce Light	Fissa Steady	Lampeggiante sincr.* Sync flashing*	Sequenziale Sequence
Alimentazione Input voltage	11...48 VDC	Consumo max. Max. power consumpt.	1 side: 0.76 W@48 V 2 sides: 1.54 W@48 V
Materiale Material	Polycarbonato V0 Polycarbonate V0		
Dimensioni Dimensions	90 x 128 x 25 mm		

* Con modulo lampeggio esterno - *With external flashing control unit.





SOLAR GROUND

Marker LED fotovoltaici a raso

Resistenza meccanica: 20 t/m

Pur essendo carrabile il prodotto deve essere installato al di fuori della carreggiata

Flush mount photovoltaic LED markers

Mechanical resistance: 20 t/m

Even if carriageable the product must be installed outside of the roadway

Conforme	Art.153 (Art.40 C.d.S.)		
Colore LED LED colour	○ Monofacciale - Single side	○○ Bifacciale - Double side	
Luce Light	Fissa Steady	Lampeggiante Flashing	
Funzionamento Working	☾ Solo notte Only night	Accumulatore Storage	Batteria Ni-Mh Ni-Mh Battery
Materiale Material	Alluminio pressofuso Die-cast aluminum		
Dimensioni Dimensions	Monofacciale - Single side Bifacciale - Double side	83 x 106 x 51 mm ø145 x 50 mm	



SOLAR TOP 06

Marker LED fotovoltaici a raso

Resistenza meccanica: 20 t/m

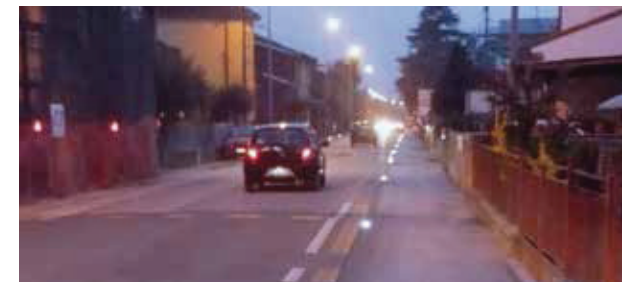
Pur essendo carrabile il prodotto deve essere installato al di fuori della carreggiata

Flush mount photovoltaic LED markers

Mechanical resistance: 20 t/m

Even if carriageable the product must be installed outside of the roadway

Conforme	Art.153 (Art.40 C.d.S.)		
Colore LED LED colour	● ○ Monofacciale - Single side		
Luce Light	Fissa Steady	Lampeggiante Flashing	
Funzionamento Working	☾ Solo notte Only night	Accumulatore Storage	Batteria Ni-Mh Ni-Mh Battery
Materiale Material	Polycarbonato Polycarbonate		
Dimensioni Dimensions	ø100 x 62 mm		





SOLAR TOP 24

Marker stradale fotovoltaico a LED

Non carrabile

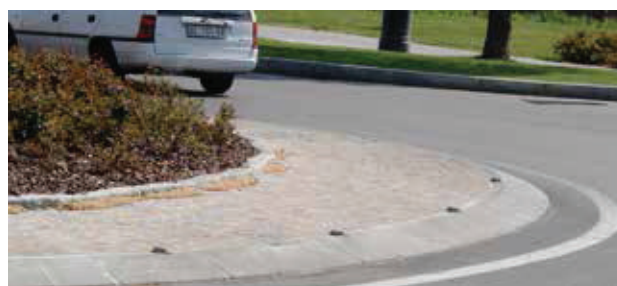
Il prodotto deve essere installato al di fuori della carreggiata

LED photovoltaic road marker

Not carriageable

The product must be installed outside of the roadway

Conforme	Art.153 (Art.40 C.d.S.)		
Colore LED LED colour	●● ●●	Bifacciale - Double side	
Luce Light	Fissa Steady	Lampeggiante Flashing	
Funzionamento Working	☾ Solo notte Only night	Accumulatore Storage	Batteria Ni-Mh Ni-Mh Battery
Materiale Material	Alluminio pressofuso Die-cast aluminum		
Dimensioni Dimensions	110 x 97 x 24.5 mm		



SOLAR TOP 20

Marker stradale fotovoltaico a LED

Non carrabile

Il prodotto deve essere installato al di fuori della carreggiata

LED photovoltaic road marker

Not carriageable

The product must be installed outside of the roadway

Conforme	Art.153 (Art.40 C.d.S.)		
Colore LED LED colour	● ● ●	●● ●● ●●	Bifacciale - Double side
Luce Light	Fissa Steady	Lampeggiante Flashing	
Funzionamento Working	☾ Solo notte Only night	Accumulatore Storage	Batteria Ni-Mh Ni-Mh Battery
Materiale Material	Alluminio pressofuso Die-cast aluminum		
Dimensioni Dimensions	110 x 97 x 24.5 mm		

